

TAEPPDD501

Maintain and enhance professional practice

TAE50116 Diploma of Vocational Education and Training

Week 3, 2019

Today's agenda

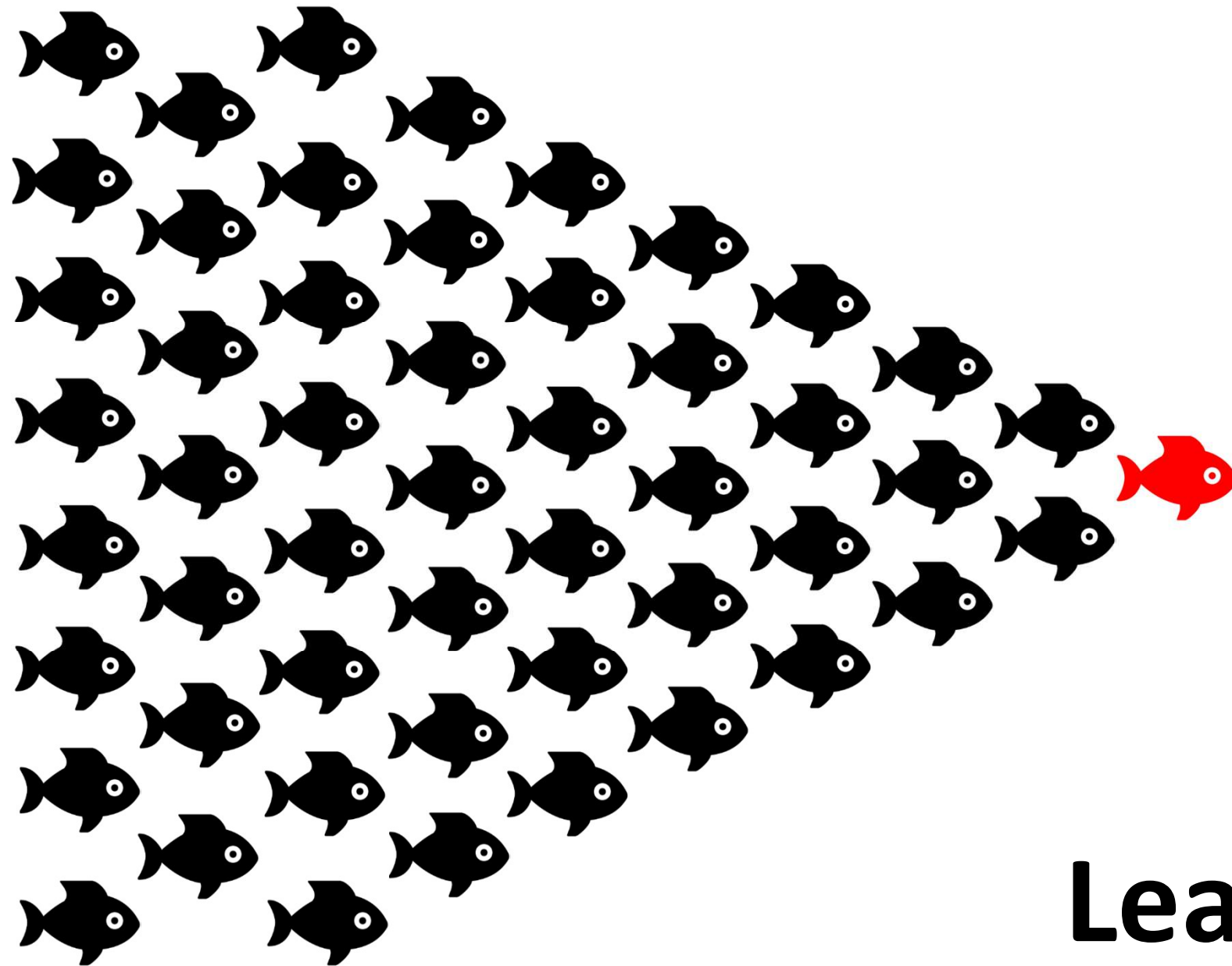


- Presentations
 - Assessment Task 1, Part C
 - Assessment Task 2, Part B
- Clarify TAE PDD501 assessment requirements
- Introduce the TAE ASS501 unit
 - Assessment systems and processes
 - TAE ASS501 assessment requirements

In summary



- Leadership: model high standards of performance
- Compliance with the Standards for RTOs
- Professional development cycle
 - Determine development needs
 - Develop PD plan
 - Participate in PD activities
 - Document PD activities
 - Evaluate professional practice



Leadership

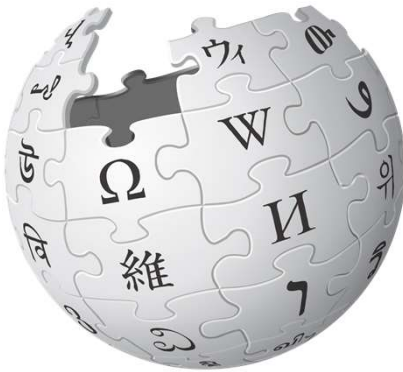
Introduction to TAEASS501 unit



TAEASS501 Provide advanced assessment practice

- Terminology
 - What is a system?
 - What is a process?
- Assessment system and processes
- Overview of TAEASS501 Assessment tasks

Terminology



WIKIPEDIA
The Free Encyclopedia

- What is a system?
 - A system is a group of interacting or interrelated entities that form a unified whole
- What is a process?
 - A process is a collection of related, structured activities or tasks by people or equipment which in a specific sequence produce a service or product

Assessment system components

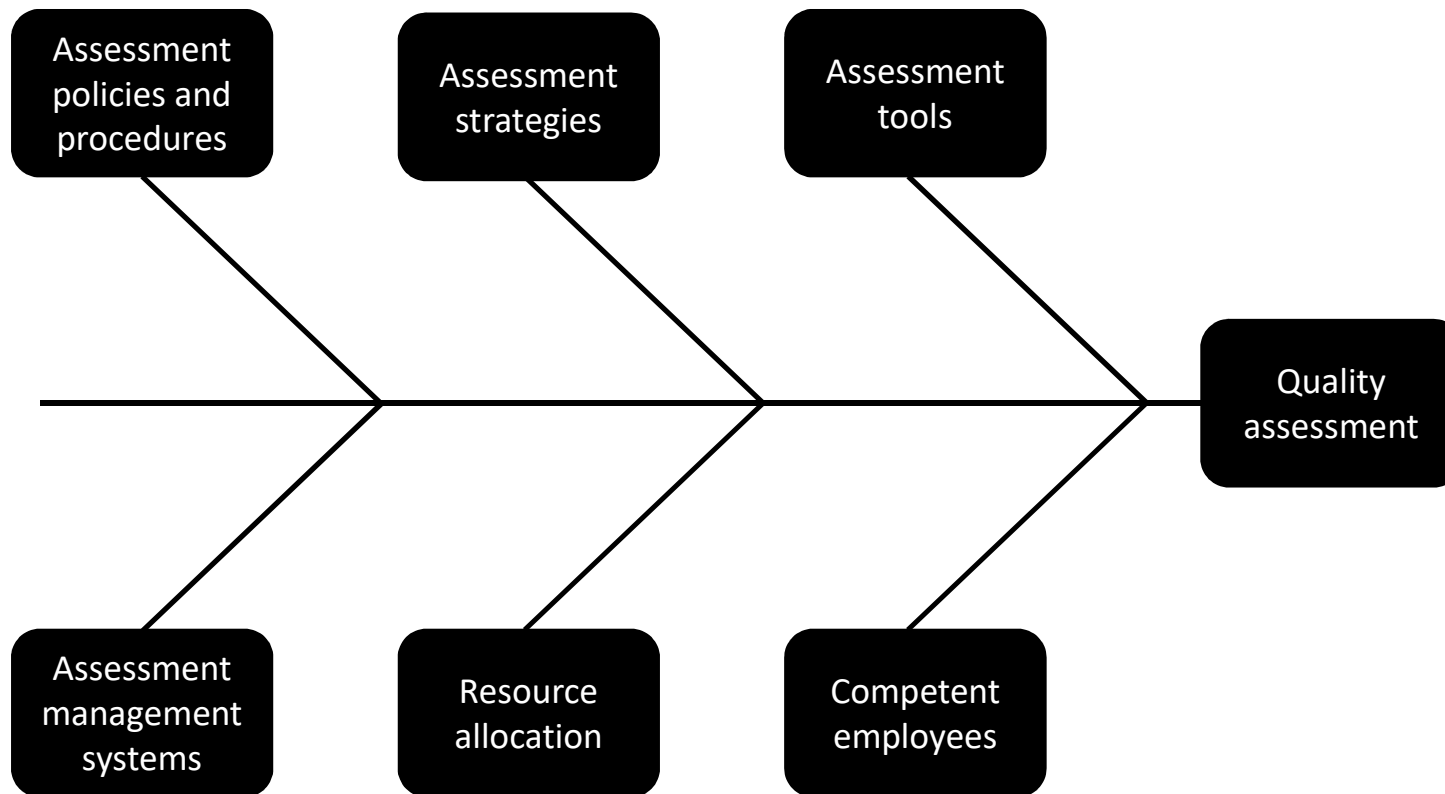
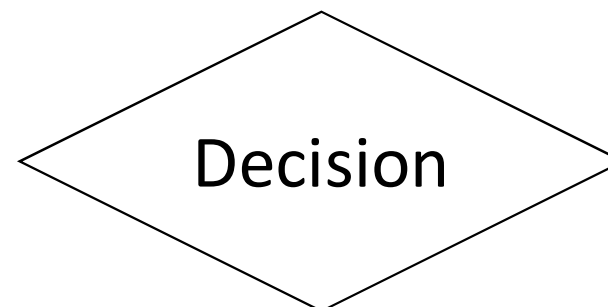
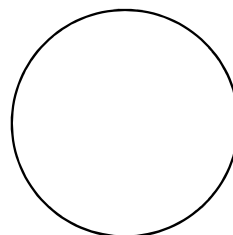


Image: On Target Work Skills © 2019

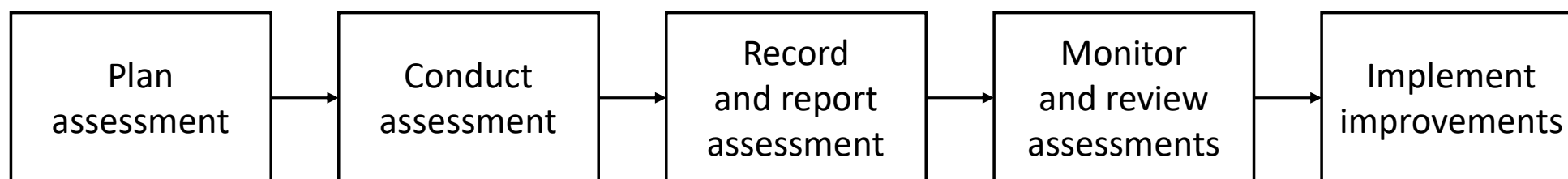
Flowchart symbols



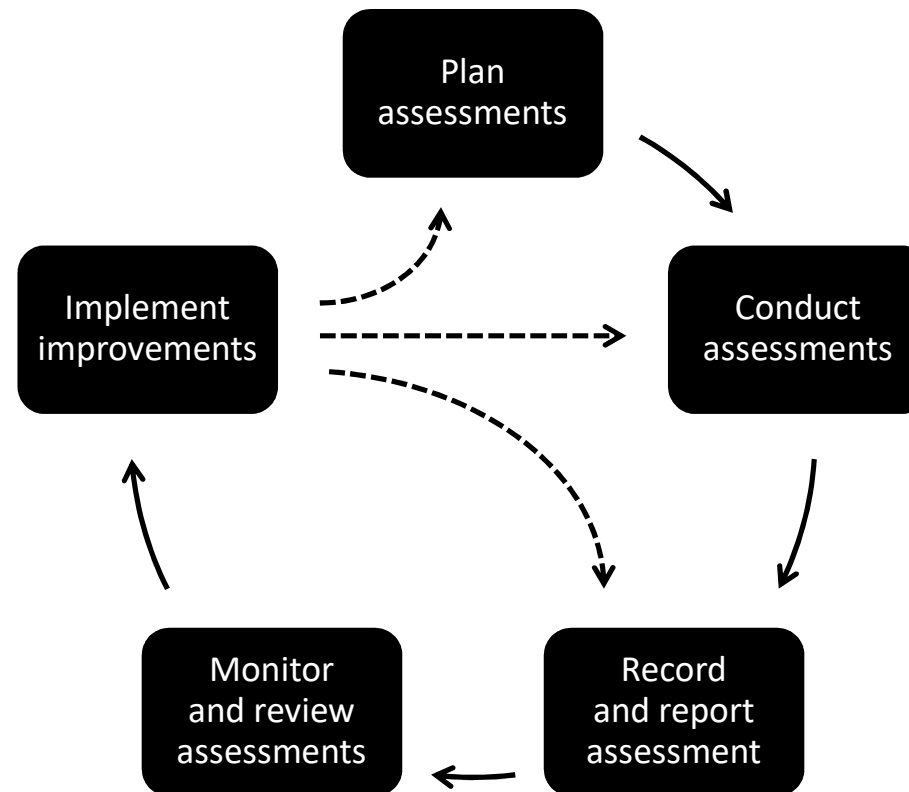
Connection



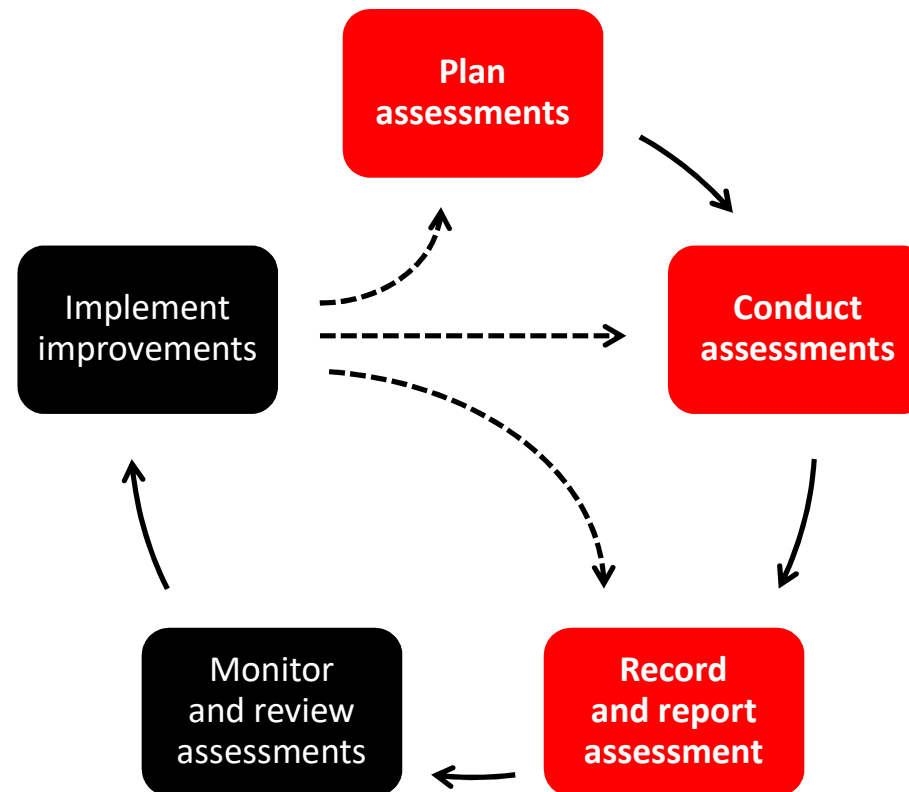
Simple flowchart



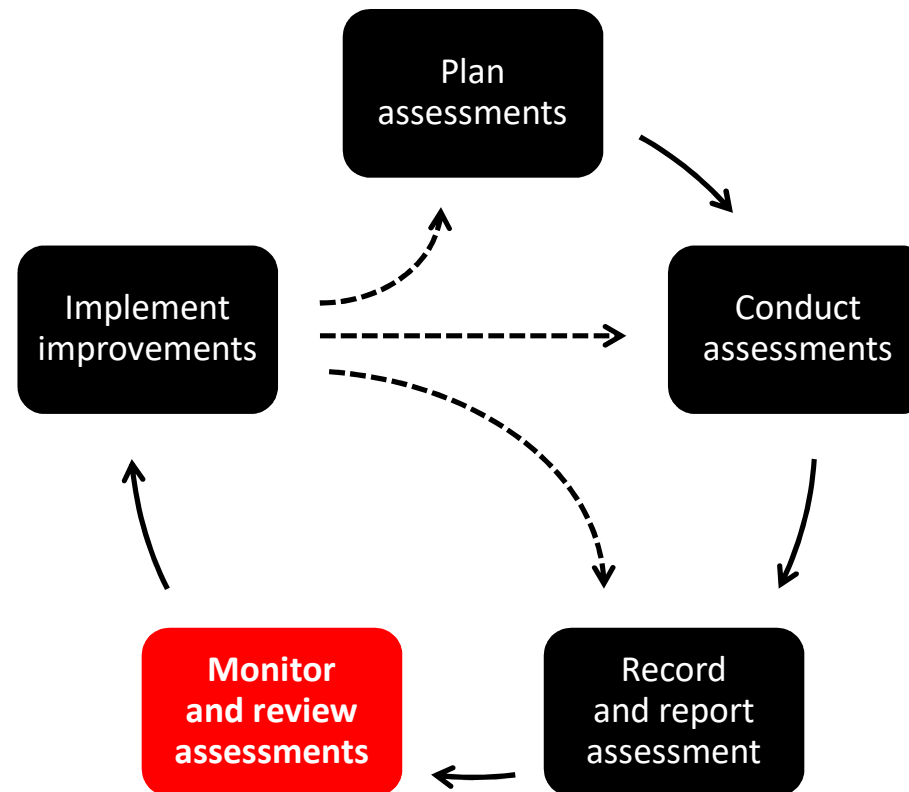
Assessment system processes



Assessment system processes



Assessment system processes

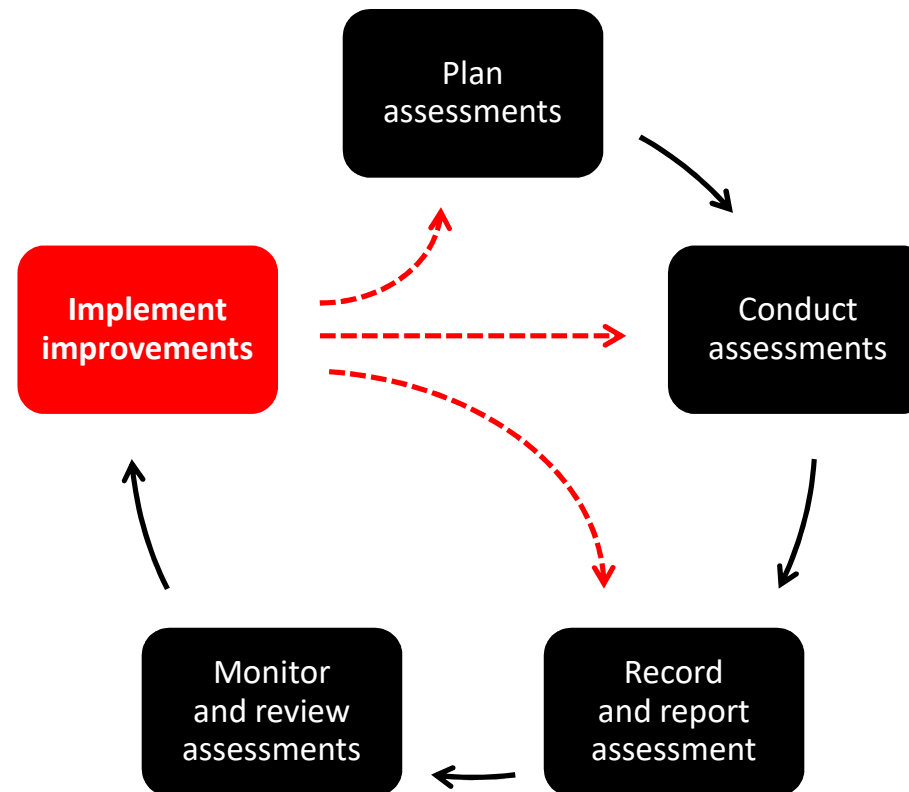


Monitor and review processes



- Internal and external audits
- Analysis of performance feedback
 - Complaints and appeals
 - Feedback and suggestions for improvement from learners, assessors and RTO administrators
- Assessment validation
- Assessment moderation

Assessment system processes



TAEASS501 Assessment tasks



| Assessment | Assessment title | Deliverable |
|------------|--------------------------------------|--|
| Task 1 | Assessment practice | Practicum |
| Task 2 | Assessment system and processes | <ul style="list-style-type: none">• Report (Word document)• Copy of your RTO's 5 year validation schedule• Copy of your RTO's moderation procedure or process (used as part of Task 3, Part 2) |
| Task 3 | Assessment moderation (presentation) | <ul style="list-style-type: none">• Notes for PD session (Word document)• PowerPoint slides• Handout given to participants• Completed feedback forms from participants• Completed observation form from your TAE assessor• Feedback on improvements of assessment practices and process (Word document) |
| Task 4 | Moderation process | <ul style="list-style-type: none">• Report (Word document)• Three third party verification forms (3 different colleagues in your RTO)• Verification by RTO Authorised Officer or delegate |

TAEASS501 Assessment Task 2



- Planning assessment
- Conducting assessment
- Finalising assessment
- Monitoring and review
 - Organisation
 - Group of assessors
- Implementing improvements
- Attachments must include:
 - Copy of your RTO's 5 year validation schedule
 - Copy of your RTO's moderation procedure or process

Before next training session



- Submit your evidence for TAE PDD501 by 17 April
- Read:
 - TAE ASS501 Learning Guide
 - TAE ASS501 Assessment Task Workbook
- Write your report and gather attachments for TAE ASS501 Assessment Task 2
- If you have completed the above tasks, research and write report for TAE DEL502 Assessment Task 1

Final question

What has been the one most important thing you have learnt from today's training session?



Alan Maguire